

# Cadillac HO-Scale Models

## 1949-52 Series 62



<https://www.shapeways.com/product/4SGDSVRE3/1-87-1949-52-cadillac-series-62-coupe>



<https://www.shapeways.com/product/X4BCKKVS6/1-87-1949-52-cadillac-series-62-sedan>



<https://www.shapeways.com/product/NJTJWYASH/1-87-1949-52-cadillac-series-62-fastback>

## 1949-52 Eldorado



<https://www.shapeways.com/product/3J9Y7Z3EZ/1-87-1949-52-cadillac-eldorado-convertible>

## 1959 Station Wagon



<https://www.shapeways.com/product/V7C9JLT4R/1-87-1959-cadillac-station-wagon>



<https://www.shapeways.com/product/ENJR5Z6JJ/1-87-1959-cadillac-station-wagon-with-roof-rack>

## 1965 DeVille



<https://www.shapeways.com/product/DRT93TPNU/1-87-1965-cadillac-deville-coupe-kit>



<https://www.shapeways.com/product/UZERLTFWR/1-87-1965-cadillac-deville-sedan-kit>



<https://www.shapeways.com/product/TTS3RJ3N3/1-87-1965-cadillac-deville-eldorado-convertible>

## 1966 DeVille



<https://www.shapeways.com/product/TAV44RHS8/1-87-1966-cadillac-deville-coupe-kit>

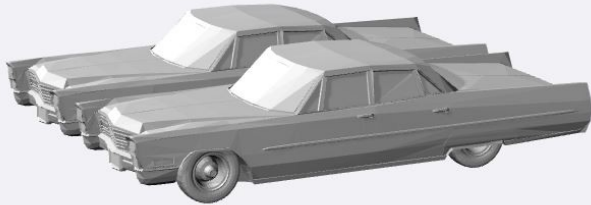


<https://www.shapeways.com/product/HVHQGTFFX/1-87-1966-cadillac-deville-sedan-kit>



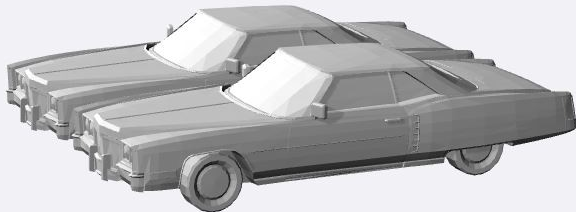
<https://www.shapeways.com/product/87P7W3DND/1-87-1966-cadillac-deville-convertible-kit>

### 1967 DeVille



<https://www.shapeways.com/product/H9QCTYQZ5/1-87-1967-cadillac-sedan-deville>

### 1971 Eldorado



<https://www.shapeways.com/product/UYZH86JHJ/1-87-1971-cadillac-eldorado-convertible>

### 1972 Deville



<https://www.shapeways.com/product/NL9SW4TPH/1-87-1972-cadillac-de-ville>

### 1974 Deville



<https://www.shapeways.com/product/CBKH5PS86/1-87-1974-cadillac-sedan-de-ville>

## 1974 Deville



<https://www.shapeways.com/product/BNFTS2NW6/1-87-1974-cadillac-deville-coupe-kit>



<https://www.shapeways.com/product/9YWQHAG3G/1-87-1974-cadillac-sedan-deville>



<https://www.shapeways.com/product/4NLQB2BUQ/1-87-1974-cadillac-fleetwood-75-kit>

## 1974 Hearse

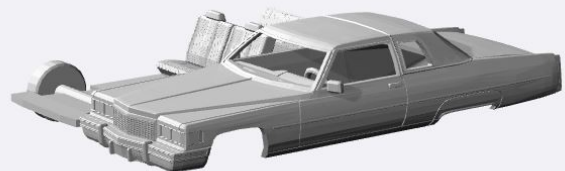


<https://www.shapeways.com/product/C5CZHHEAC/1-87-1974-cadillac-hearse>

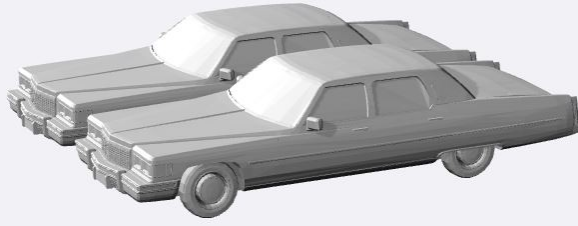
## 1975 Fleetwood



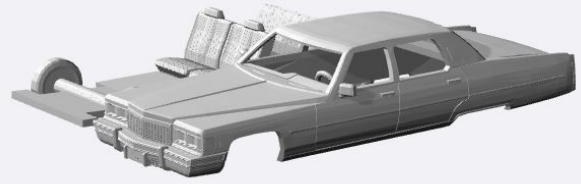
<https://www.shapeways.com/product/RVKLYB4G4/1-87-1975-cadillac-fleetwood-brougham-coupe>



<https://www.shapeways.com/product/G4EDUNAWH/1-87-1975-cadillac-fleetwood-brougham-coupe-kit>



<https://www.shapeways.com/product/UFHADUFR7/1-87-1975-cadillac-fleetwood-brougham>



<https://www.shapeways.com/product/H7UDCEEJS/1-87-1975-cadillac-fleetwood-brougham-sedan-kit>

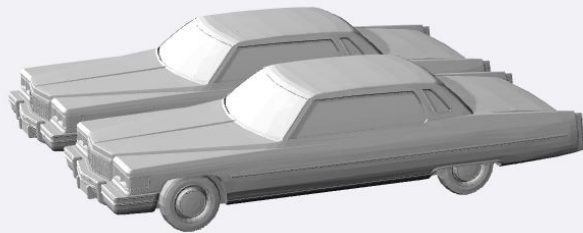


<https://www.shapeways.com/product/7FQDB7KD8/1-87-1975-cadillac-fleetwood-75-strech-limosine>



<https://www.shapeways.com/product/J2D8DZLRN/1-87-1975-cadillac-fleetwood-brougham-75-kit>

### 1975 DeVille



<https://www.shapeways.com/product/WSSZNF665/1-87-1975-cadillac-sedan-deville>

### 1975 Hearse

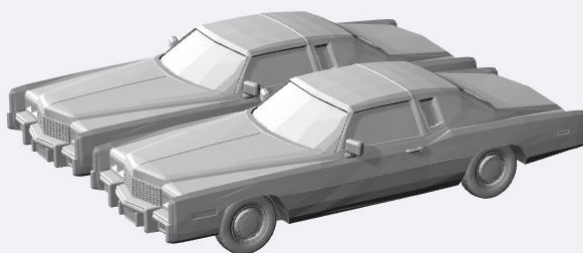


<https://www.shapeways.com/product/PJQU6KPEW/1975-cadillac-hearse>

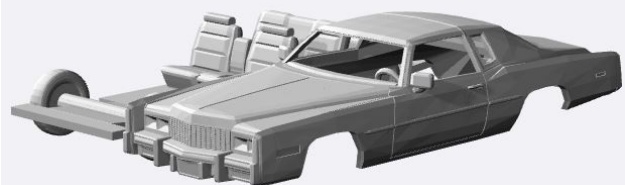


<https://www.shapeways.com/product/5VXGBMSWC/1-87-1975-cadillac-hearse>

### 1975-78 Eldorado

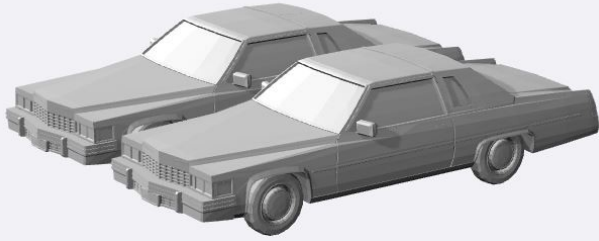


<https://www.shapeways.com/product/CNRRBXUVU/1-87-1978-cadillac-eldorado>



<https://www.shapeways.com/product/E677QN5UQ/1-87-1975-78-cadillac-eldorado-kit>

## 1977 DeVille/Fleetwood



<https://www.shapeways.com/product/PQADB9UWG/1-87-1977-cadillac-de-ville-coupe>



<https://www.shapeways.com/product/SGQH9DSMB/1-87-1977-79-cadillac-deville-coupe-kit>



<https://www.shapeways.com/product/5ECM23W7B/1-87-1977-cadillac-fleetwood-brougham>



<https://www.shapeways.com/product/NRXHMTNNT/1-87-1977-79-cadillac-fleetwood-brougham-kit>

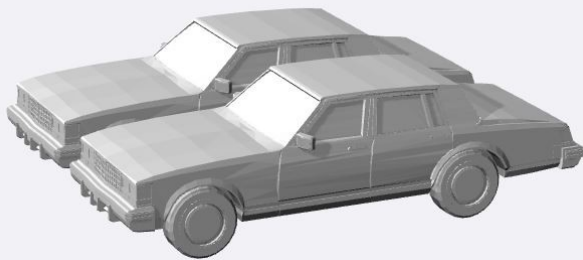


<https://www.shapeways.com/product/8AR5HJR57/1-87-1979-cadillac-fleetwood-custom-limousine>



<https://www.shapeways.com/product/Z72Q9YGNT/1-87-1979-cadillac-fleetwood-custom-limo-kit>

## 1977 Seville



## 1980-85 Seville



<https://www.shapeways.com/product/JELC8JYZQ/1-87-1980-85-cadillac-seville>

## 1983 Eldorado



<https://www.shapeways.com/product/L3FLJU9TW/1-87-1983-cadillac-eldorado>

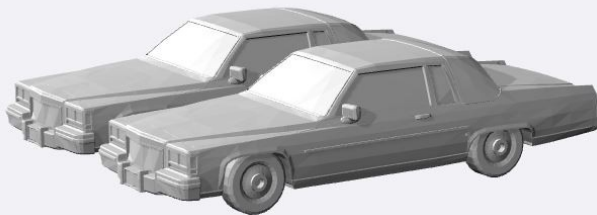


<https://www.shapeways.com/product/SPDBKRNWG/1-87-1983-cadillac-eldorado-convertible-top>

## 1983 Fleetwood



<https://www.shapeways.com/product/23HNXXRQV/1-87-1983-cadillac-fleetwood-brougham>



<https://www.shapeways.com/product/GKNK5TZRM/1-87-1984-cadillacdeville-coupe>

## 1985-89 Hearse



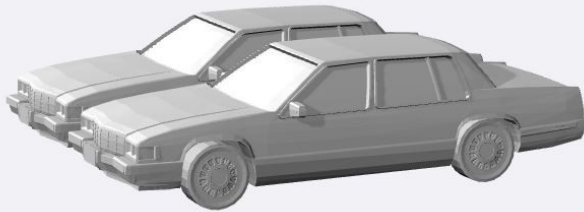
<https://www.shapeways.com/product/XGSJWR9WX/1-87-1985-89-cadillac-hearse>

### 1991 Fleetwood



<https://www.shapeways.com/product/T7DF5TZXT/1-87-1991-cadillac-fleetwood-coupe>

### 1992 DeVille



<https://www.shapeways.com/product/44R8YLLDX/1-87-1992-cadillac-deville>

### 1992-02 Eldorado

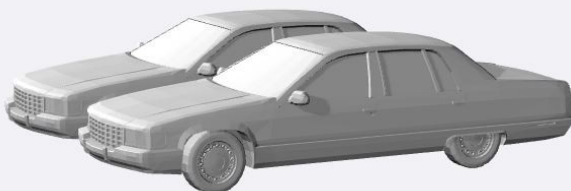


### 1994-96 DeVille



<https://www.shapeways.com/product/VAPQEPZWG/1-87-1994-cadillac-deville>

### 1996 Fleetwood



<https://www.shapeways.com/product/3TP4BQEWJ/1-87-1996-cadillac-fleetwood-brougham>



### 1996-01 Catera



<https://www.shapeways.com/product/AK2CFQ8NH/1-87-1996-01-cadillac-catera>

### 1997-2000 DTS



<https://www.shapeways.com/product/4ED5N67K4/1-87-2000-cadillac-dts-de-ville>

### 1999-01 Escalade



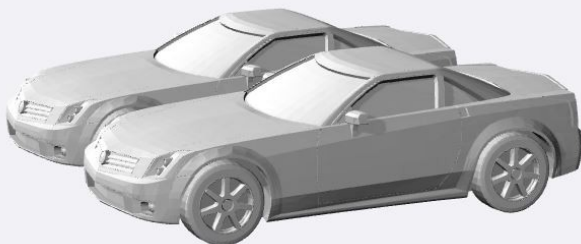
<https://www.shapeways.com/product/RAK8GJHA4/1-87-1999-01-cadillac-escalade>

### 2001-06 Escalade



<https://www.shapeways.com/product/5F6AN354R/1-87-2001-06-cadillac-escalade>

### 2004-09 XLR



<https://www.shapeways.com/product/ZY6KDQP3F/1-87-2004-09-cadillac-xlr>

## 2006-14 Escalade



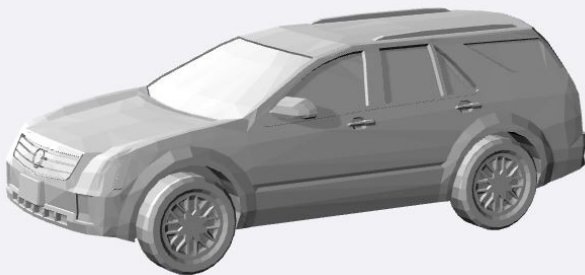
<https://www.shapeways.com/product/CUJ52DKUR/1-87-2006-14-cadillac-escalade>

## 2007-13 CTS



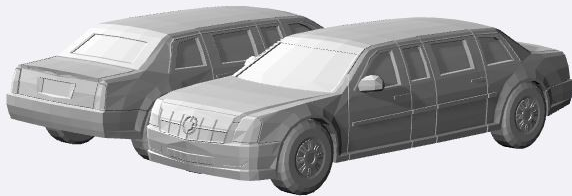
<https://www.shapeways.com/product/VFYX8YUGR/1-87-2007-13-cadillac-cts-v-coupe>

## 2008 SRX



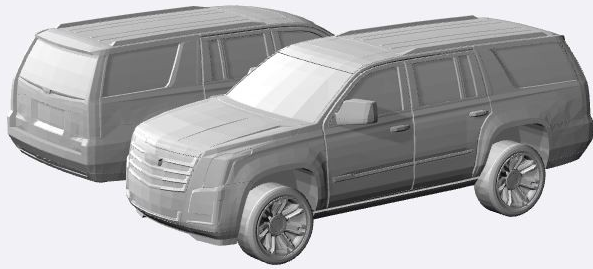
<https://www.shapeways.com/product/9Q7JUED7A/1-87-2008-cadillac-srx>

## 2009 Presidential



<https://www.shapeways.com/product/RQZ6NGUJM/1-87-2009-cadillac-presidential-state-car>

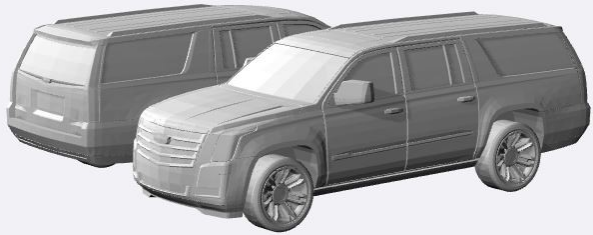
## 2015-19 Escalade



<https://www.shapeways.com/product/BZGWXP64K/1-87-2015-18-cadillac-escalade>



<https://www.shapeways.com/product/GY2WCBGC2/1-87-2015-18-cadillac-escalade-kit>



<https://www.shapeways.com/product/Q5RZQDANK/1-87-2015-18-cadillac-escalade-xl>



<https://www.shapeways.com/product/X3LDFSJNQ/1-87-2015-18-cadillac-escalade-xl-kit>